

# Online Exhibits on a Shoestring: Berklee College of Music Archives

Ernie Gillis, Manager of Learning Resources Web Development  
Sofía Becerra-Licha, Archivist

New England Archivists Fall 2014 Meeting: November 1, 2014

# Intro: about the Archives at Berklee

- Background: archives established in 2012
- Resources: challenges & strengths
- Online exhibits: vision, tools & strategies



NATIONAL  
ARCHIVES

---

NATIONAL HISTORICAL  
PUBLICATIONS  
& RECORDS COMMISSION

# Online Exhibits: where we started...

- Static web content
- Historically significant content
- Showcases content and technology
- <http://youtu.be/jtrKWLy4AcY>

# Online Exhibits: where we're going...

- Fully dynamic metadata index
- Browsible and searchable content
- Ability to create virtual display pages
- Manage access and permission needs
- <http://youtu.be/netSg28HPGY>

# Online Exhibits: how we are getting there...

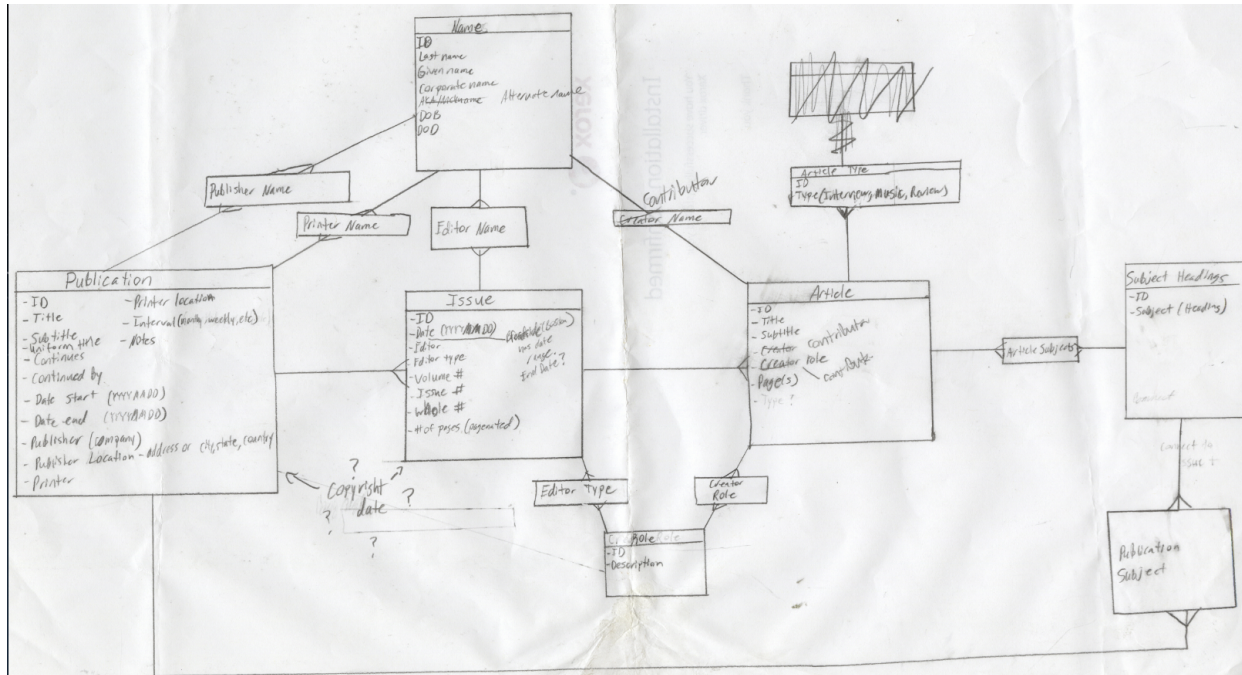
- Design local “closed” index for metadata migration
  - FileMaker database
- Enter metadata and content from static, and dynamic infrastructures
  - Copied text from static page
  - URLs to link metadata to asset in digital repository

[http://youtu.be/\\_g89aRVwa\\_4](http://youtu.be/_g89aRVwa_4)

# Online Exhibits: how we do it

- Create work plan for student employee and graduate interns
  - Intern:
    - designs database layout
    - creates base content foundation
    - writes documentation for continued content metadata management
  - Student employee adds and updates metadata based on Intern's documentation

# Online Exhibits: Example Documentation



# Online Exhibits: what we are using..

- FileMaker as intermediary metadata storage and management
- Open Source technologies
  - Islandora (<http://islandora.ca>)
  - Drupal (<http://drupal.org>)
  - Fedora Commons (<http://fedora-commons.org>)



**Number 1 lesson learned:**

**Do what you can with what you have**

# Demonstration & discussion: workflows, tools, & strategies

- Dean Earl papers

- <https://library.berklee.edu/archives/archives-virtual-display/dean-earl>
- <https://archives.berklee.edu/berklee-bca-010-earl>
  - <http://youtu.be/WfqkSoU0BG8>

- Lawrence Berk papers on the Schillinger System

- <https://library.berklee.edu/archives/archives-virtual-display/lbss>

- Frank McGinley collection on Duke Ellington

- <https://library.berklee.edu/archives/archives-virtual-display/franklin-mcginley-collection-duke-ellington>
- <https://archives.berklee.edu/berklee-bca-004-mcginley>
  - [http://youtu.be/ZEJtmi\\_sgOY](http://youtu.be/ZEJtmi_sgOY)

- Periodicals Index

- <http://archives.berklee.edu/berklee-bca-033-popular-music-periodical-collection>

- Berklee Oral History Project

- <https://library.berklee.edu/archives/archives-virtual-display/bohp>
- <https://archives.berklee.edu/berklee-bca-011-bohp>

# Contact us



Ernie Gillis, Manager of Learning Resources Web Development  
[egillis@berklee.edu](mailto:egillis@berklee.edu)

Sofía Becerra-Licha, Archivist  
[sbecerralicha@berklee.edu](mailto:sbecerralicha@berklee.edu)

Berklee College of Music Archives website: [library.berklee.edu/archives](http://library.berklee.edu/archives)

Virtual displays: <https://library.berklee.edu/archives/archives-virtual-display>